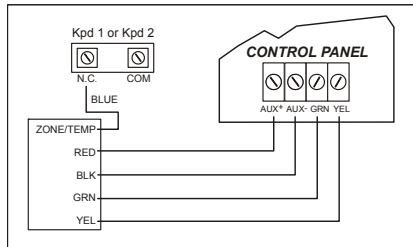


Wiring Diagram



Technical Specifications

Power Input	9 to 16Vdc
Display	16-bit, color LCD; 6.4 x 11.2 cm (2.5 x 4.4 in.), 480 x 272 pixels
Consumption	Standby: 100mA, Alarm: 200mA
Dimensions	14.4 x 9.6 x 1.4 cm (5.7 x 3.8 x 0.6 in.)
Weight	165 g (5.8 oz)
Humidity	5-90%
Sensors	Indoor temperature sensor
Compatibility	EVO v2.16 or higher, MG/SP v4.72 or higher

Warranty: For complete warranty information on this product, please refer to the Limited Warranty Statement found on the Web site www.paradox.com/terms. Your use of the Paradox product signifies your acceptance of all warranty terms and conditions.

© 2012 Paradox Ltd. All rights reserved. Specifications may change without prior notice. www.paradox.com

TM50 Touch Intuitive Touchscreen Quick Install Guide

P ▲ R ▲ D O X™

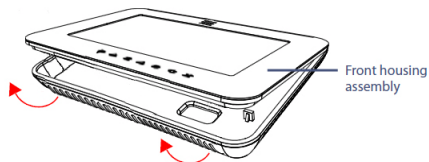
TM50-EI01

The TM50 Touch Intuitive Touchscreen allows you to control your Paradox system's functions through its touchscreen interface. Use the following instructions to install your new TM50 Touch.

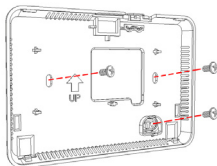


Installation

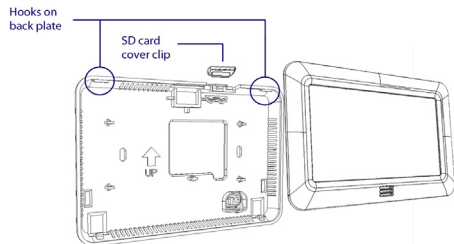
1. Using a screwdriver, pry the front housing assembly from the backplate.



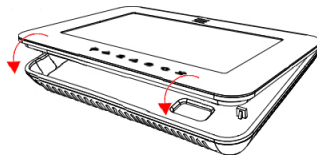
2. Mount the backplate to the wall by securing a M3.5 (#6) screw in each of the dedicated mounting holes and tamper hole. Ensure that the **UP** arrow on the backplate is in the up position.



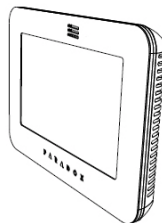
3. Assemble both items by joining the hooks on the backplate to their respective slots on the front housing assembly. Make sure the SD card cover clip is secured.



4. Make sure to connect the unit's 5-pin connector. Secure the front housing to the backplate by snapping it into place.



The installation process is complete.



TM50 Touch to Panel Connections

As shown in the *Wiring Diagram*, the red, black, green, and yellow wires on the TM50 Touch must be connected to their corresponding labeled terminals on the control panel's PCB. The blue wire is connected to either a keypad zone or external temperature sensor.