



High reliable outdoor detector with brand-new pyro-element

HX-40

High mount outdoor PIR detector

HX-40AM

High mount outdoor PIR detector with anti-masking function

The HX series is an outdoor detector for high-end applications.

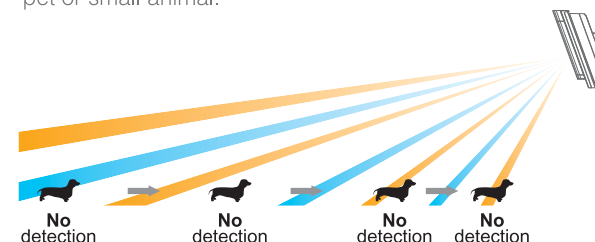
OPTEX has developed a unique pyro-element to achieve high reliability and performance. It provides multiple pattern detection area with 94 highly density detection zones and accurate discrimination function for spot temperature changes of moving objects. These features reduce false and missed alarms drastically caused by outdoor severe environmental changes and provide a wide range of applications.

Accurate detection performance is necessary in severe outdoor environments. The HX series meets this requirement.

High detection performance to prevent false and missed alarms

Intelligent AND logic with unique pyro-element

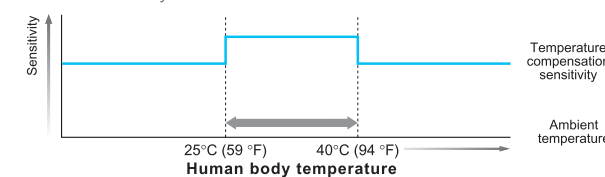
The HX employs originally developed pyro-elements which create unique area configuration with 94 high density detection zones. By utilizing the AND detection pattern technology - upper and lower detection areas have to be activated in order to generate an alarm condition, the HX series prevents false alarms caused by pet or small animal.



Dual signal processing circuit

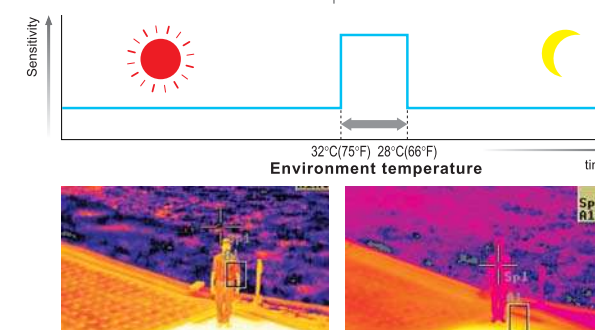
● Advanced temperature compensation logic

It automatically increases the detector's sensitivity, especially where the background temperature ranges from approx. 25 to 40°C (59 – 94°F), close to that of the human body.



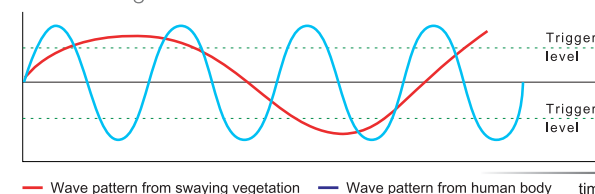
● Summer night compensation logic

It is effective for the severe environmental condition such as summer evening and nights. The HX series addresses this issue by the additional measurement of luminance levels as the environment changes and allows sensitivity to automatically sharpen as environmental conditions require.



Vegetation sway analysis logic

The HX series monitors wave changes at all the times and automatically cancels the signal caused by swaying grass when it determines the increase of this distinctive wave changes.



Digital anti-masking technology (patent pending) HX-40AM

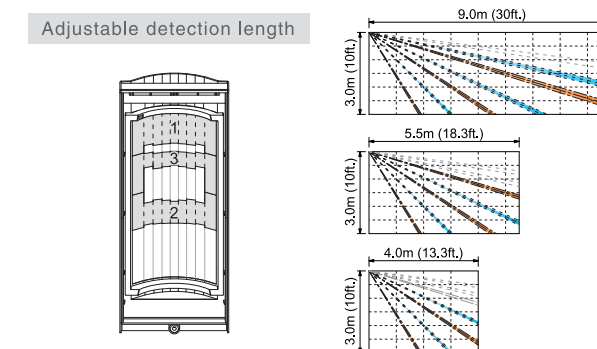
Digital processing circuit can guarantee its permanent reliability in a practical way. According to on going environmental changes the HX-40AM can regularly make automatic optimization.

Double conductive shielding against unwanted light disturbances

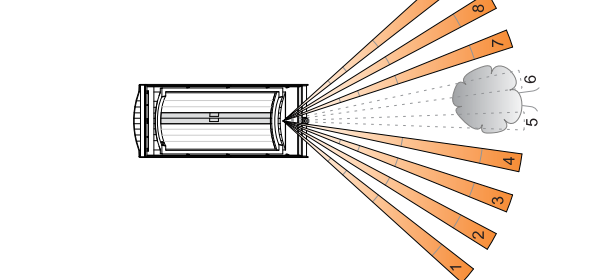
By using double shielding, the visible light disturbances such as reflected sunlight and RFI can be blocked.

Ideal detection area setting to achieve accurate installation

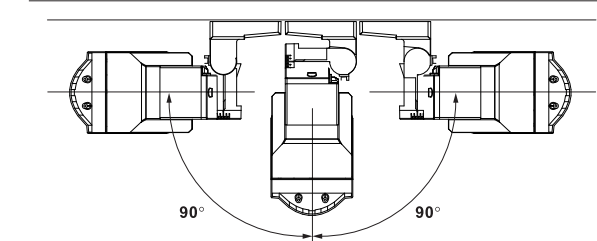
● With masking seal



● Spot area flexible masking



● With 180° angle adjustable bracket



Environmental responsiveness design

- The look 20° downward design and accessory hood prevents the rain, wind, or direct sunlight direct to the lens surface.
- The original cuts done on the lens surface strengthen its durability and offers better protection against the outdoor severe environmental condition.

