



JWM-PATROL IN 8 STEPS



QUICK START GUIDE
Model:WM-5000V4S

A guard tour system

Welcome to JWM-Patrol!

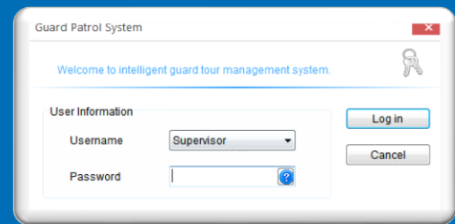
This short guide will help you configure all basic settings needed to setup your JWM-Patrol account for first time and learn about all the necessary steps in order to quickly manage patrols.

1 LOGIN YOUR ACCOUNT

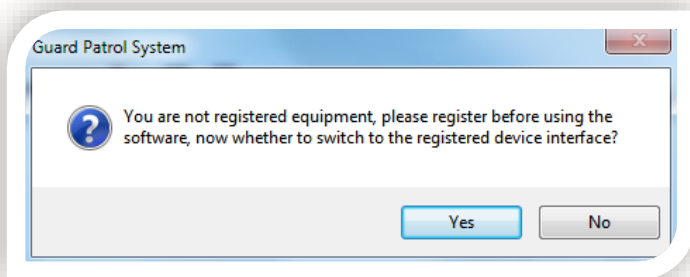
Username: Supervisor

Default Password: 999

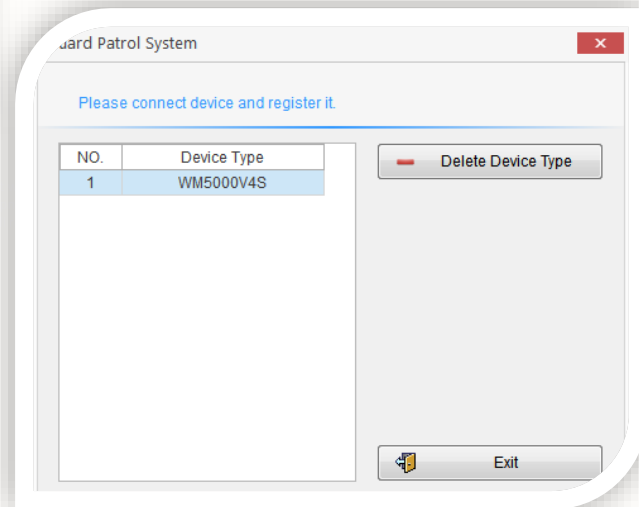
Click on "Log in" to enter the software



2 REGISTER YOUR DEVICE IN THE SOFTWARE



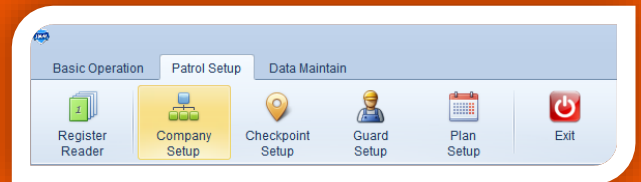
When enter the software first, it will prompt you to register the device. Please click on "Yes", the device will register automatically. Each model only need to register once.



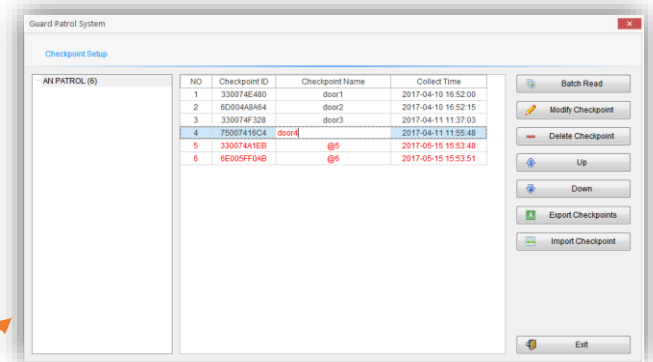
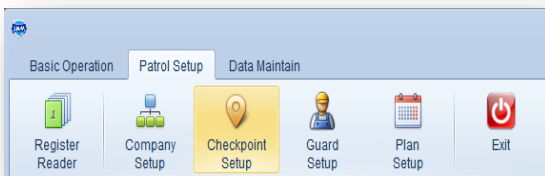
3 MANAGE YOUR COMPANY

Click on “Company Setup” under “Patrol Setup”, and click on “Add Company”

You can edit its name.
You also can delete/modify company there.

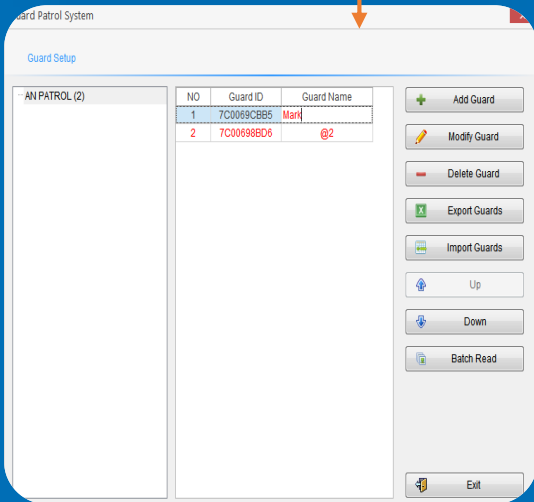
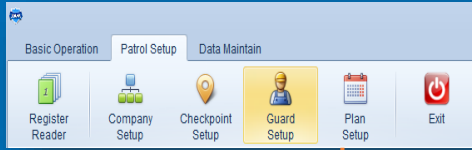


4 MANAGE YOUR CHECKPOINTS



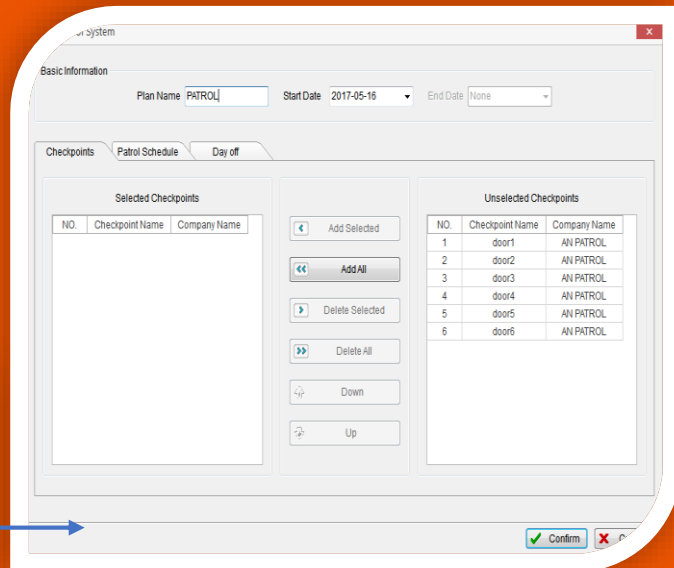
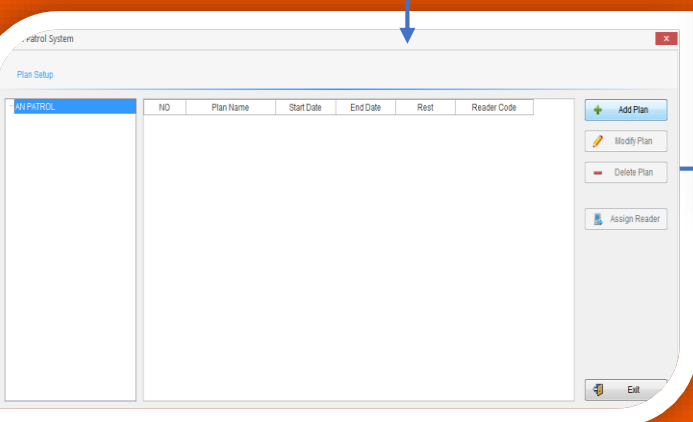
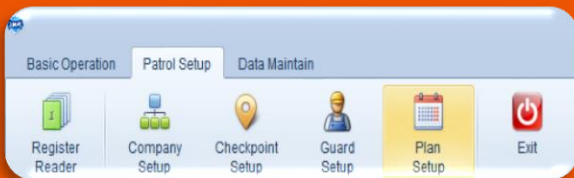
Select one company, then use the device to read RFID Tags one by one. Connecting the device with computer and click on “Batch Read”, it will shows checkpoints ID as you read. You can edit their names. You can also delete/modify checkpoints there.

5 MANAGE YOUR GUARDS (OPTIONAL)

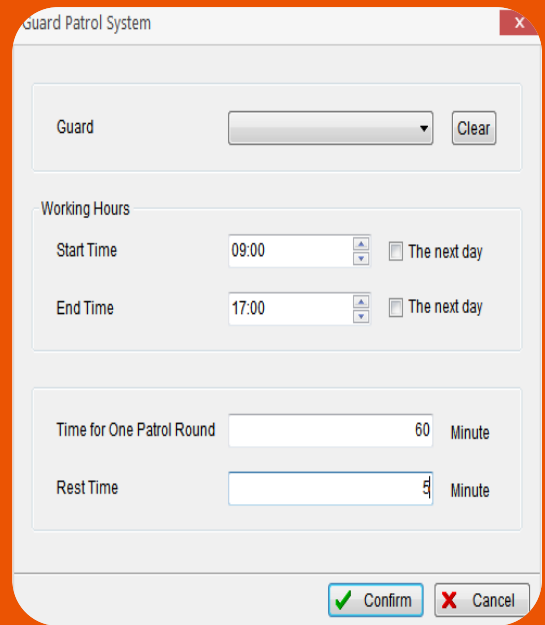
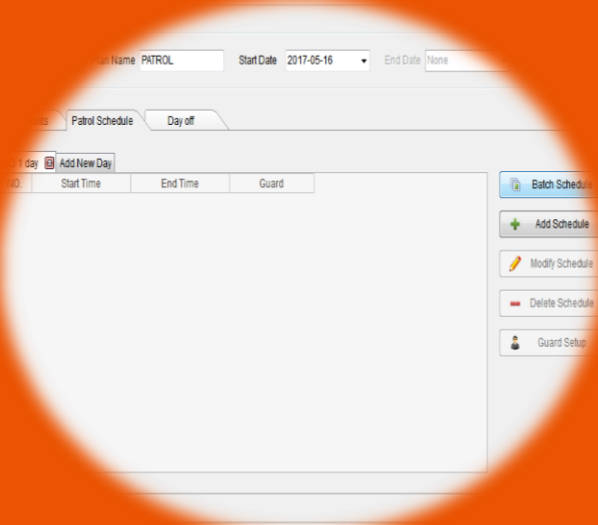


Select one company, then use the device to read Guard ID Tags one by one. Connecting the device with computer and click on "Batch Read", it will shows guards ID as you read. You can edit their names. You can also delete or modify guards there.

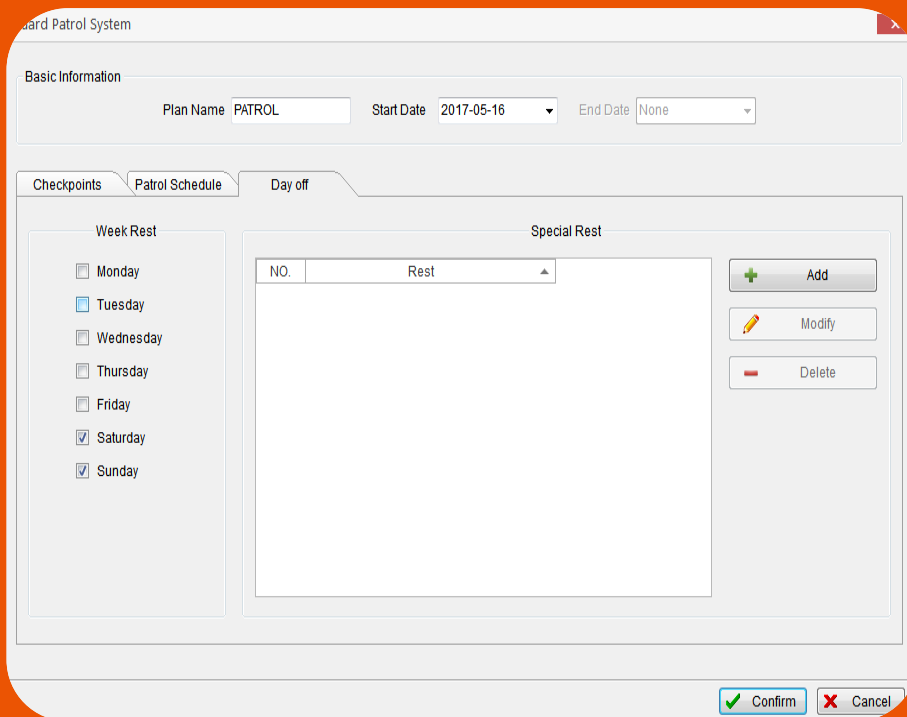
6 MANAGE YOUR PLAN



- 1)Click on "Patrol Setup" and select the "Plan Setup"
- 2)Click on "Add Plan"
- 3)Choose the checkpoints for your plan.



- 4) Select the "Patrol Schedule" and click on "Batch Schedule"
- 5) Set the guard(optional), working hours and patrol frequency as your needs.



- 6) In the "Day off", you can add the normal rest day in week rest, if you have special holiday, you can add it in special rest.

7 START A PATROL

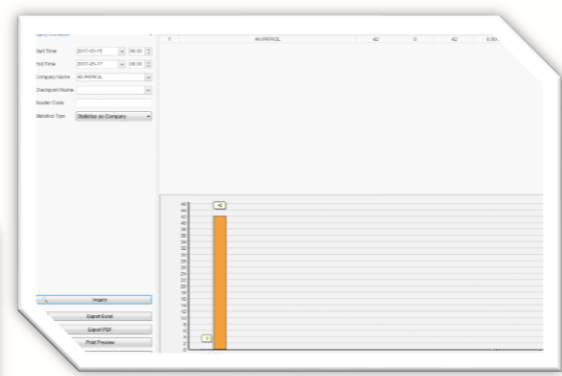
Now, you are ready to start a new patrol!
Take the device to read checkpoints that you have install in different places.



8 END PATROL TOUR

Inquiry Condition	No.	Company Name	Start Time	End Time	Checkpoint Name	Reader Code	Data Type
	1	AN PATROL	2017-05-15 9:00:00	2017-05-15 10:00:00	PATROL	6	0
	2	AN PATROL	2017-05-15 10:00:00	2017-05-15 11:00:00	PATROL	6	0
	3	AN PATROL	2017-05-15 11:00:00	2017-05-15 12:00:00	PATROL	6	0
	4	AN PATROL	2017-05-15 12:00:00	2017-05-15 13:00:00	PATROL	6	0
	5	AN PATROL	2017-05-15 13:00:00	2017-05-15 14:00:00	PATROL	6	0
	6	AN PATROL	2017-05-15 14:00:00	2017-05-15 15:00:00	PATROL	6	0
	7	AN PATROL	2017-05-15 15:00:00	2017-05-15 16:00:00	PATROL	6	0
	8	AN PATROL	2017-05-17 9:00:00	2017-05-17 10:00:00	PATROL	6	0
	9	AN PATROL	2017-05-17 10:00:00	2017-05-17 11:00:00	PATROL	6	0
	10	AN PATROL	2017-05-17 11:00:00	2017-05-17 12:00:00	PATROL	6	0
	11	AN PATROL	2017-05-17 12:00:00	2017-05-17 13:00:00	PATROL	6	0
	12	AN PATROL	2017-05-17 13:00:00	2017-05-17 14:00:00	PATROL	6	0
	13	AN PATROL	2017-05-17 14:00:00	2017-05-17 15:00:00	PATROL	6	0
	14	AN PATROL	2017-05-17 15:00:00	2017-05-17 16:00:00	PATROL	6	0

Inquiry Condition	No.	Company Name	Start Time	End Time	Checkpoint Name	Reader Code	Data Type
	1	AN PATROL			door5	0C01-12345678	2017-05-16 20:06.
	2	AN PATROL			door5	0C01-12345678	2017-05-16 20:06:57
	3	AN PATROL			door5	0C01-12345678	2017-05-16 20:06:58
	4	AN PATROL			door5	0C01-12345678	2017-05-16 20:06:59
	5	AN PATROL			door5	0C01-12345678	2017-05-16 20:07:00
	6	AN PATROL			door5	0C01-12345678	2017-05-16 20:07:01
	7	AN PATROL			door5	0C01-12345678	2017-05-16 20:07:04
	8	AN PATROL			door5	0C01-12345678	2017-05-16 20:07:05
	9	AN PATROL			door5	0C01-12345678	2017-05-16 20:07:06
	10	AN PATROL			door5	0C01-12345678	2017-05-16 20:07:07
	11	AN PATROL			door5	0C01-12345678	2017-05-16 20:07:09
	12	AN PATROL			door5	0C01-12345678	2017-05-16 20:07:10
	13	AN PATROL			door5	0C01-12345678	2017-05-16 20:07:11
	14	AN PATROL			door5	0C01-12345678	2017-05-16 20:07:12



Finally, after patrolling, connecting the device with computer by USB cable. And click on "Read Data", then you can see the data in "Patrol Report", "History Data" and "Statistics". You can also export the Excel or PDF about the report.

JWM-Patrol guard tour system



JUST WORK MIRACLE

sales@jwm-rfid.com
support@jwm-rfid.com