

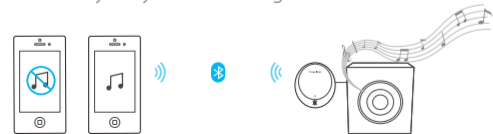
Play Music on Another Smart Device

1. On the currently paired device, end the connection by:
 - Disabling Bluetooth or disconnecting **TP-LINK_Music**, or
 - Placing its back against the NFC Tag or Music Receiver (*only for NFC-enabled Android devices*)
2. On another device, pair to the Music Receiver, then play and enjoy music!

Bonus Tips

After pairing a second device, you can restore connection of the former device to enjoy music from them *in turns*. Simply pause music on one device and play on the other one.

Note that audio may delay when switching from an iOS device.



FAQ

Q1. Why can't I pair the Music Receiver?

- A. The Music Receiver is ready to be paired only when its LED turns white. Check the LED.
 - If it is off, re-plug the power cable or try another power outlet.
 - If it is blue, check your other paired devices and end the connection.

Q2. What can I do if my music does not come out from my stereo?

- A1. Make sure your smart device and the Music Receiver are successfully connected, within 20 meters (66 feet) of each other, and within a direct line of sight. The Music Receiver will be disconnected if your device's Bluetooth signal is blocked, interfered, or out of range for longer than 5 minutes.
- A2. Make sure your stereo and the Music Receiver are correctly connected via one of the provided audio cables, and both are powered on.
- A3. Make sure the volume on your music player and stereo are at an audible level.



Need more information?
Visit our website: www.tp-link.com

FCC STATEMENT



This device complies with part 15 of the FCC Rules. Operation is subject to the following two conditions: (1) This device may not cause harmful interference, and (2) this device must accept any interference received, including interference that may cause undesired operation.

CE Mark Warning



This is a class B product. In a domestic environment, this product may cause radio interference, in which case the user may be required to take adequate measures.



©2016 TP-LINK 7106505793 REV2.0.0

TP-LINK
The Reliable Choice

HA100 | Quick Start Guide



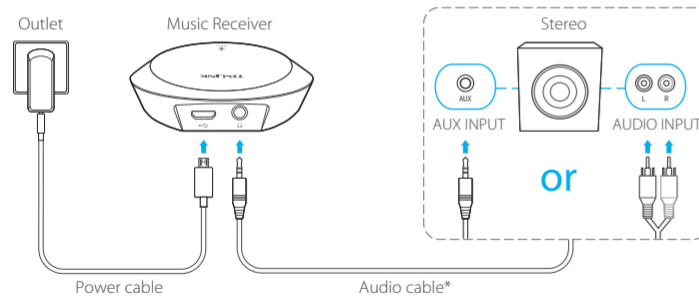
Bluetooth Music Receiver

Bringing Bluetooth to your home stereo

Connect

1

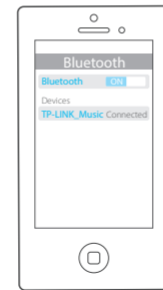
Add Bluetooth to your home stereo as shown. The LED on the Music Receiver will turn white.



* Two audio cables are provided. Choose the one that suits your home stereo.

Method 1: Bluetooth pairing

1. On your smart device, enable Bluetooth in **Settings**.
2. Pair **TP-LINK_Music** in the list of found devices.



- ☀ White: Ready to be paired
- 🔵 Blue: Bluetooth connected
- ⬛ Off: Powered off

Pair

2

Method 2: NFC pairing (Only for NFC-equipped Android devices)

1. On your Android device, enable NFC (Near Field Communication) in **Settings**.
2. Place the back of your device against the Music Receiver or provided NFC Tag until the pairing request pops up.
3. Confirm the pairing request.



Place against



- ☀ White: Ready to be paired
- 🔵 Blue: Bluetooth connected
- ⬛ Off: Powered off

or



NFC Tag

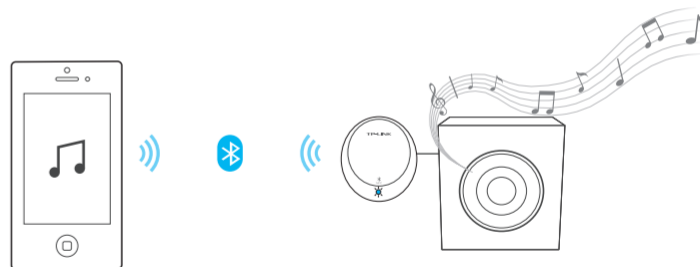
Tips: For convenient pairing, you can stick the provided NFC Tag to a handy object within 20 meters (66 feet) from the Music Receiver.

Enjoy

😊

It's music time!

Keep in mind that you can play your music from up to 20 meters (66 feet), within a direct line of sight.



More: Want to play music on another smart device? Flip the paper for instructions.